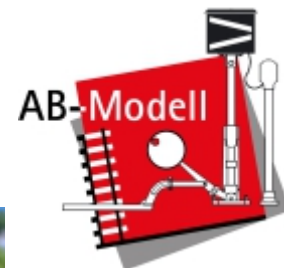


New items 2016 (part2) Climb up with Schynige Platte-railroad.



Anja Bange Modellbau
Im Stuckenbahn 6
D-58769 Nachrodt
Fax: +49(0)2352/3348-62

info@n-schmalspur.de

www.n-schmalspur.de



The motorization the Schynige Platte-railroad-loco was a very special challenge. The track and the chassis of the loco had to be constructed totally new. A special coupler is tested at the moment.

The chassis which had to fit into the 20mm long half pint had been constructed by sb-modellbau in Olching. The result is a phantastic railway, climbing up the steepest grades. That's the impression of a real cog-wheel-railway.

He2/2 13 & 14
Ne-503.x

He2/2 16 & 18
Ne-504.x

Art.-Nr./item-no./produit-no.

He2/2 13 red - rolling

He2/2 13 red - motorized

He2/2 14 rusty brown - roll.

He2/2 14 rusty brown- mot.

Art.-Nr./item-no./produit-no.

He2/2 16 red - rolling

He2/2 16 red - motorized

He2/2 18 rusty brown - roll.

He2/2 18 rusty brown - mot.

We will offer during 2016 both versions of the loco with rectangle (11-14) and round windows at the side (15-18), as rolling or as motorized item, ready-to-run, in red or rusty brown.

A two-coloured version, as well as the Teddyland-advertizing loco will follow, in case of enough demand.

| Model | Price/Item-# |
|--|------------------------|
| SPB He2/2 13 - red, ready-to-run rolling | EUR 195,-- Ne-503.2 |
| SPB He2/2 13 - as above, motorized (sb-modellbau Maxon) | EUR 445,-- Ne-503.3 |
| SPB He2/2 14 - rusty brown, rtr, rolling | EUR 195,-- Ne-503.4 |
| SPB He2/2 14 - as above, motorized (sb-modellbau Maxon) | EUR 445,-- Ne-503.5 |
| SPB He2/2 16 - red, ready-to-run rolling | EUR 195,-- Ne-504.2 |
| SPB He2/2 16 - as above, motorized (sb-modellbau Maxon) | EUR 445,-- Ne-504.3 |
| SPB He2/2 18 - rusty brown, rtr rolling | EUR 195,-- Ne-504.4 |
| SPB He 2/2 18 - as above, motorized (sb-modellbau Maxon) | EUR 195,-- Ne-504.5 |
| SPB B41ff. - red-ivory, ready-to-run, rolling | EUR 249,-- Ne-505.2 |
| SPB B3ff. - rusty brown, ready-to-run, rolling | EUR 195,-- Ne-506.2 |

Vorbestellpreis/early-order-price/prix précommande

Vorbestellung bis
Reservation until
Réservation jusqu'à

30.04.2016



The Schynige Platte-railroad is really exciting in the center of Bernese Oberland. The motorized locos will bring now action into the scenery. Running on 4,5mm track, the chassis milled out of brass and using a 12 Volts Maxon-motor, gives the very best possibilities for an excellent movement. We have tested the machine during 4 days on the Stuttgart fair - without any problems. So build your cogwheel-railroad now!



Coaches B41 ff. Ne-505.2

Art.-Nr./item-no./produit-no.

B41 - B52, red-ivory - rolling

Summer coaches B3 ff. Ne-506.2

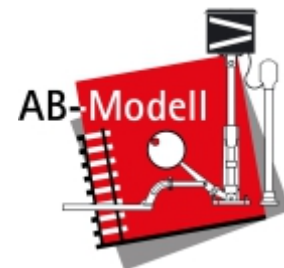
Art.-Nr./item-no./produit-no.

B3 and B7, rusty brown - rolling

These small beautiful trains may run on your layout soon too: both types of locos and coaches on our diorama.

Both versions of coaches (standard-coach in red-ivory and open coach for summer-use in rusty brown) will be available ready-to-run too. If there is enough demand, we will add the summer-coach no.6 (with white trim-lines) to our programme too.

cog-wheel-track Ne climb the steepest grades on 4,5mm



Anja Bange Modellbau
Im Stuckenbahn 6
D-58769 Nachrodt
Fax: +49(0)2352/3348-62

info@n-schmalspur.de

www.n-schmalspur.de



15% grade - it is an ease to climb upwards on our module, which has been presented in Stuttgart. We have tested the loco and it has become a real cat burglar: 25% even in combination with a coach in front had been no problem. The same grade as prototype does.

Now it's your turn - let it climb on your layout too!

Track system - Riggengbach greets

Nikolaus Riggengbach had no problems with the scale 1:1. But we have, because in 1:160 a real working cog-wheel-system is not possible.

To climb up the hills, we use modern, very strong magnets of neodym-material. They press the chassis to the track to achieve enough traction for the loco and the coach. See pictures on the right and the additional explanations. Our kits contains three mayor elements:

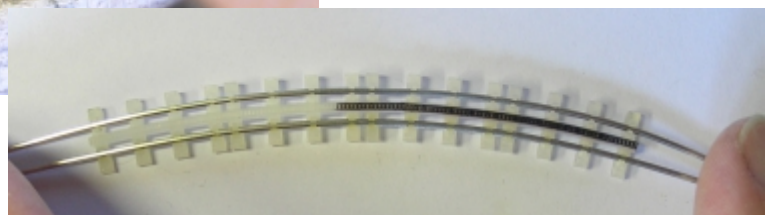
1st - sleepers include the Riggengbach-cograil

2nd - single cograils for standard-tracks

3rd - templates for turnouts and the correct spacing
The sleepers are 3D-printed. They include the cograil, as well as the clamps for the profiles. It is easy to slip the Code40-profile into the clamps. Bend it carefully. For sharp curves, it is necessary to bend the profile before slipping it into the clamps.

Those fans who do not want to build the track by themselves could buy track of Zm-scale (metre-gauge in Z-scale). Just glue the single cograils in the middle of the track. That's all!

For assembling the turnouts we have designed special templates. Lay down the sleepers into the spaces and solder the profile into the correct position. This is a bit difficult and experience is needed. If you are not willing to build the turnouts by your own, buy ready-to-run Zm-turnouts on the web and add the single cograils for perfect look.



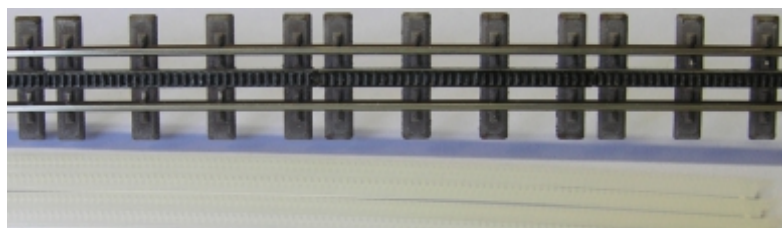
glue - coloring brown - blacking cograil - balast track

The 3D-printed sleepers work as a flexible track does: push the profile carefully into the clamps. Now bend a bit. For sharp curves bend the profile before pushing into the clamps!

Trackwork is easy: the counterpole for the magnet is glued on the route first. In this case we used 4 pieces of steel-catenary-wire from Sommerfeldt. Of course you can use a feather-steel or a metal strip as well.

Regard: the thicker the counterpole is, the stronger is the force of the magnet. For a plain area a thinner steel is useful, but for the steepest grades use a thick one!

A strip of cardboard at the sides is used to have the same height on the route. Glue down the sleepers incl. profile, paint them in rusty brown, paint the head of the cograil with a black marker, add the balast you prefer - ready!



Above: ready painted track. In front you can see the cograils, which are glued into the Zm-track or Zm-turnouts.

Left: the template for turnouts. The spaces are filled with pc-board-sleepers, profile is soldered onto them. Templates for bending and for the frog help to get a good result.

| Model | Price/Item-# |
|---|-----------------------|
| chassis for He2/2, ready-to-run, incl. etching-part as replacement part for the floorplate in the kit Ne-503.x/Ne-504.x | EUR 250,- Ne-500.0 |
| 3D-printed sleepers, including cograil, about 33cm | EUR 19,50 Ne-518.1 |
| 3D-printed cograil, about 33cm | EUR 4,- Ne-518.2 |
| template for turnouts, nickel-silver etching, for right and left turnout, incl. bending-template and frog-template | EUR 25,- Ne-519.1 |
| designset for turnouts, nickel-silver etching, incl. points, replication of clamps, bars, cograils, for turnout right | EUR 6,- Ne-520.1 |
| designset for turnouts, as above, for turnout left | EUR 6,- Ne-520.2 |
| gauge-template for Ne, 4,5mm track, nickel-silver etching | EUR 4,- Ne-521.1 |

Vorbestellpreis/early-order-price/prix précommande

Vorbestellung bis
Reservation until
Réservation jusque

30.04.2016